



SPECIALIZED IN DESIGNING AND
COMMISSIONING OF TECHNICAL
FURNISHING SOLUTIONS

www.morayme.com



**THE PERFECT BUILDING
IS NOT ENOUGH TO
DELIVER GOOD SCIENCE**



INDEX

- 003 - About us
- 004 - BONlab - Lab Furniture
- 005 - BONlab - Furniture models
- 006 - Worktops
- 007 - Storage Systems
- 008 - Lab Fittings and Showers
- 009 - Other Accessories
- 010 - Other Accessories
- 011 - Special Furniture
- 012 - Fume Cupboard
- 013 - Fume Cupboard
- 014 - Fume Extraction systems
- 015 - Erlab Products
- 016 - Erlab Products
- 017 - Stainless Steel furniture
- 018 - Laboratory Pictures
- 019 - Laboratory Pictures
- 020 - PreFab Buildings
- 021 - PreFab Buildings
- 022 - Our Partners

To know more about us, please visit our website
www.morayme.com
or call us +97165771201

ABOUT US

www.morayme.com



Apply innovative design and best practice to provide optimum solution for our client's needs



To be a perfect service provider with superior quality products and services, that consistently meet customer's expectation.

SINCE 2013

WE ARE SPECIALIZED IN DESIGNING AND COMMISSIONING OF TECHNICAL FURNISHING SOLUTIONS such as Educational institutional laboratories, Food industrial laboratories, Testing laboratories, Research laboratories, Treatment plant laboratories, Petroleum laboratories, Oil laboratories, Health care and hospital laboratories, Paint laboratories, Cement laboratories ,Textiles and garments laboratories, Agricultural laboratories, Fisheries laboratories ,Veterinary laboratories, Computer labs, Archaeological laboratories, Micro biological laboratories, Film industries, Forensic laboratories, Container and mobile laboratories etc...

We provide state of the art, cost effective specialized furnishing solutions for clients throughout UAE, MIDDLEEAST and AFRICAN countries.

We offer a full design, bespoke manufacture and installation service. Using our own experienced professionals, allows us to guarantee and provide a consistent high quality installation and laboratory construction service. Our unique turnkey service delivers a cost effective laboratory solution for our clients.

We are equipped with advanced CAD capabilities offering the ability to see a virtual representation of your final product, be it Laboratory, interior works, Class rooms, General fabrications, Pre-fabricated container buildings, etc...

BONLAB

LABORATORY FURNITURE



FURNITURE CONSTRUCTION models



STREAM 1

The STREAM-1 series furniture range is a fixed system. Solid worktops are fixed on pedestal units. This system does not require any framework and suits permanent benching particularly with services.



STREAM 2

The STREAM-2 series is designed with hygiene in mind, Worktops are supported on Metal H' Frame (made of 30 / 40 mm square tubes) which provides easy cleaning for floors. An ideal solution for hospitals or infection-control labs.



STREAM 3

The STREAM-3 series are similar to STREAM-2 while the metal frames are C' type Cantilevered and suspended under bench cabinets are hanging on the frame.



STREAM 4

The STREAM-4 under bench furniture series is a robust furniture system on braked castors that can easily be moved around your laboratory. This series will be a combination of STREAM 1, 2 and 3.



EPOXY

Epoxy Resin is the modern laboratory benchtop material that offers a perfect combination of features and benefits. It is durable, extremely chemical and stain resistant, mechanically strong, easily cleaned and decontaminated and exhibits good fire resistance and fire propagation properties.

Custom made worktops available from 19mm to 25mm thick epoxy sheets

TRESPA®



T03.4.0
Silver Grey

T70.0.0
Slate Grey

TRESPA -toplab

Trespa is a flat one piece panel based on thermosetting resins, homogeneously reinforced with cellulose fibres and manufactured under high pressure and temperature. It is ideal for laboratory environments



ACRYLIC - solidsurface

Solid surface is an ideal material for commercial and residential application such as kitchen, reception, etc. The fabrication advantages are flexible, can be cut, shaped, moulded, and formed in to 3D shapes.

Solid surface worktops are made of 12mm thick solid surface sheets backed with 18 to 36mm plywood with integrated backsplash and downturn



STAINLESS STEEL

Stainless steel is extremely durable, stain resistant, will not chip or fade, easy to clean, and 100% recyclable. We usually use 304 or 316 grade Stainless steel for specific applications. Integral fixing of SS sinks and backsplash is standard with our tops.



POLY POLYPROPYLENE

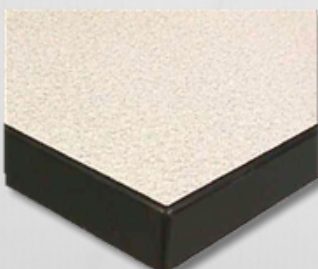
Polypropylene worktop has good level of chemical resistance recommended for moisture and wet areas.

Custom made worktops available from 3mm thick to 15mm thick Polypropylene sheets backed with 18mm to 36mm plywood worktops and hot melt glued PVC edging.



GRANITE

Granite worktop made of granite of minimum 19mm thickness .The exposed edges shall be round molded. All worktops shall be with 100mm backsplash on walls of same thickness.



LAMINATED PLYWOOD

Laminated Plywood is mainly using for office and dry work areas, computer lab. Plywood worktop made of 24 mm BWP (Boiled Water Proof) plywood laminated with 0.9 mm thick High Pressure Laminate on both sides. The lamination is done with hot press with minimum of 90 tones pressure. All worktops shall have 3mm thick hot melt glued PVC edging and 100mm glued back splash for wall benches.



TALL STORAGE CABINETS
Tall units are typically standalone pedestal type units. These are placed against wall, separate from benching. Tall storage cabinets provide a large storage volume



WALL MOUNTED CABINETS
Wall mounted cabinets are available with, full panel doors, solid framed glass and all glass doors



SAFETY CABINETS
Safety Cabinets to store flammable liquids, corrosives, pesticides and other hazardous materials. safety cabinets offer safe, dependable flammable liquid storage and protection. All cabinets meet OSHA and NFPA 30 requirements, and most are independently fire tested and approved by FM Approvals. Available in a variety of styles, sizes and colors.



GRATNELL TRAY TROLLYS
For over 40 years Gratnells has been one of the leading suppliers of storage trolleys and frames to hospitals. Their comprehensive range of products is ideal for all your medical storage needs from storage frames and trolleys right through to trays and trolley accessories.





LABORATORY FITTINGS
Valves / controls are essential accessories in laboratories. We deal with wide range of Laboratory fittings such as Water faucets, Gas valves etc.

LABORATORY SAFETY FITTINGS

Many laboratories contain significant risks, and the prevention of laboratory accidents requires great care and constant vigilance.

safety equipment's are designed to wash away chemicals that have come into contact with the skin or clothing as the result of a chemical splash or spill





POLY POLYPROPYLENE
SINKS



POLY POLYPROPYLENE
BOTTLE TRAPS



POLY POLYPROPYLENE
DRIP CUP SINKS



POLY POLYPROPYLENE
DILUTION TRAPS



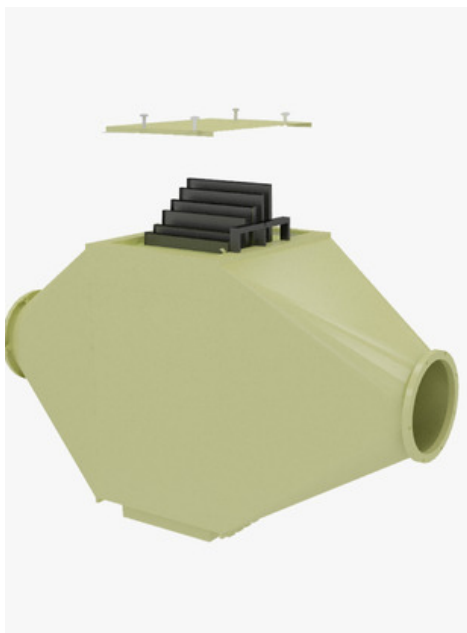
ELECTRICAL STANDOUT



ELECTRICAL PEDESTAL BOX



ATEX RATED POWER SOCKETS



ACTIVATED CARBON FILTER BOX



P P EXTRACTION BLOWER



WET SCRUBBER



PU SEATED LAB CHAIR



PU SEATED LAB STOOL



WOOD SEATED LAB STOOL



GRATNELL TRAYS



DRIP RACK



DIGFFERENTIAL PRESSURE GUAGE



MONITOR ARM



HPLC DISPOSAL UNIT



ANTI VIBRATION TABLE



KNEE OPERATED SINK UNIT



PASSTHRU BOX



SS TROLLYS



PULLOUT CABINETS



HEAVY DUTY TABLES FOR INSTRUMENTATION LABS

FUME CUPBOARDS

PURPOSE of Fume cupboard in Laboratory

A fume cupboard is typically a large equipment enclosing sides of work area. The bottom of which is most commonly positioned at a standing work height.

Chemical fume hoods, when used properly are one of the most reliable engineering controls in the Laboratory. They protect the users by:

Containing vapors, dusts, gases, fumes etc generated within the hood, and removing them as airflows in to the hood and then out via the laboratory exhaust systems.

Contributing to laboratory ventilation as air flows through the hood.

Shielding the user with a clear sliding window called sash, that controls aerosols and prevent injury from splashes, fires or minor explosions that may occur inside the cupboard.

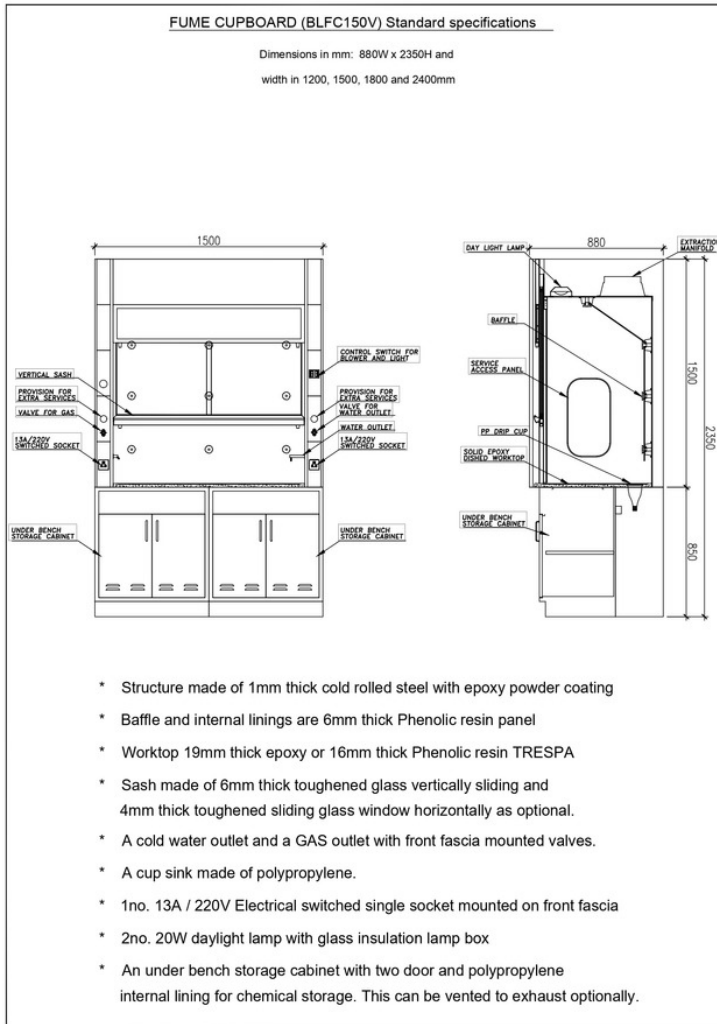
Standard specifications

Dimensions in mm: 880W x 2350H and width in 1200, 1500, 1800 and 2400mm

- * Structure made of 1mm thick cold rolled steel with epoxy powder coating
- * Baffle and internal linings are 6mm thick Phenolic resin panel
- * Worktop 19mm thick epoxy or 16mm thick Phenolic resin TRESPA
- * Sash made of 6mm thick toughened glass vertically sliding and 4mm thick toughened sliding glass window horizontally as optional.
- * A cold water outlet and a GAS outlet with front fascia mounted valves.
- * A cup sink made of polypropylene.
- * 1no. 13A / 220V Electrical switched single socket mounted on front fascia
- * 2no. 20W daylight lamp with glass insulation lamp box
- * An under bench storage cabinet with two door and polypropylene internal lining for chemical storage. This can be vented to exhaust optionally.



FUME CUPBOARDS



FUME EXTRACTORS / SUCTION ARMS / CANOPY HOODS



LAB EXTRACTION ARMS



EXTRACTION ARM FOR AAS



EXTRACTION ARM SUITABLE FOR EXPLOSIVE ENVIRONMENTS



STAINLESS STEEL EXTRACTION ARM



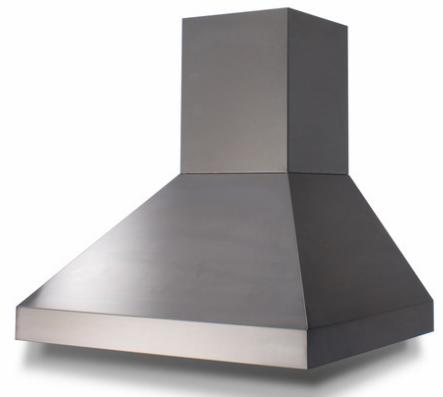
ATEX RATED EXTRACTION ARM



MOBILE EXTRACTION ARM WITH FILTER UNIT



CANOPY HOOD



CANOPY HOOD



**World Expert in Air Filtration
Since 1968**



**Global flexible solutions
for the full protection of laboratory personnel**

Halo

Laboratory air filtration system

Halo Sense

Laboratory air quality sensor

GreenFumeHood

Advanced filtration fume hood

Captair Smart

Ductless fume hoods

Captair Smart

Filtered storage cabinets

Captair Bio

PCR enclosures

Captair Flow

Clean air enclosures

Captair Pyramid

Portable glove bag

www.erlab.com



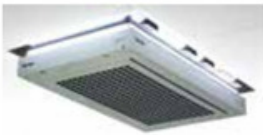
.....a wide range of safety solutions!

Protect your chemists from inhaling chemicals!



Halo Sense
Laboratory air quality sensor

The **Halo Sense** monitors in real time the air quality that you breathe in your laboratory. Available in 3 versions, it provides a solution for the detection of a wide array of pollutants and fumes. If pollution is detected, it alerts the user with a light and sound pulse.



Halo
Laboratory air filtration system

Halo is a filtration system attached to the ceiling of the laboratory room, designed to continuously clean the dirty air of the lab and to return a cleansed air into the room. The laboratory-grade molecular filtration system contains Neutrodine, a unique and powerful activated carbon mixture combined with a pre-filter that captures a large variety of airborne fumes and odours.



GreenFumeHood
Advanced filtration fume hood

The **GreenFumeHood** range of cabinets are filtration fume hoods which provide superior filtration for a broader range of chemicals, enhanced detection, and network communication. The power of the GreenFumeHoods lies within the patented technology of the Neutrodine filtration system which is ideal for multidisciplinary handlings.



Captair Smart
Ductless fume hoods

Captair Smart ductless fume hoods, which are designed to protect users during applications that emit vapors and/or chemical particles, provide a simple and innovative way of communication. Smart Technology uses Smart-Light Communication to quickly see that the hood is operating safely so you can focus your attention on what is most important: your work.



Captair Smart
Filtered storage cabinets

Captair Smart filtered storage cabinets clean continuously the chemical smells emitted by the bottles stored inside and return a cleansed air into the laboratory room. It is equipped with the Smart-Light Communication to quickly see that the cabinet is operating safely.

Other safety enclosures made by Erlab



Captair Bio
PCR workstations



Captair Flow
Clean air enclosures



Ministore
Tabletop storage cabinets



Chemtrap
Filtration boxes for fire safety storage cabinets



Venticap



Captair Pyramid
Disposable glove bag

STAINLESS STEEL FURNITURE

We offer the widest variety of custom made Stainless steel furniture like as Cleanroom tables, Pass thru boxes, workstations, work benches, storage cabinets etc.

The easy cleaning ability of steel furniture makes it the first choice for strict hygienic conditions. Stainless steel is basically inert to most of the acids/alkali's released by foods, vegetables, additives etc.. It does not normally get pitted, thus avoiding the worst chance for bacterial infection.



LAB PICTURES



LAB PICTURES





PREFABRICATED BUILDINGS

Stabil is the master and innovator of the prefabricated shipping container building industry. Having worked on turnkey projects for 15 years, our team of experienced professionals now combine their knowledge and outstanding aftersales care to offer unique, sustainable, eco-friendly housing solutions.

An affordable, "green" alternative to traditional architecture, prefabricated shipping container buildings are rapidly growing in popularity. They are a fashionable and revolutionary way to tackle the increasing demand for housing and workplace facilities. At Stabil Builders Pvt Ltd, we offer a comprehensive range of solutions to meet this demand, handling every stage of the process from the initial conceptual design to the specialist installation of custom-made furniture.

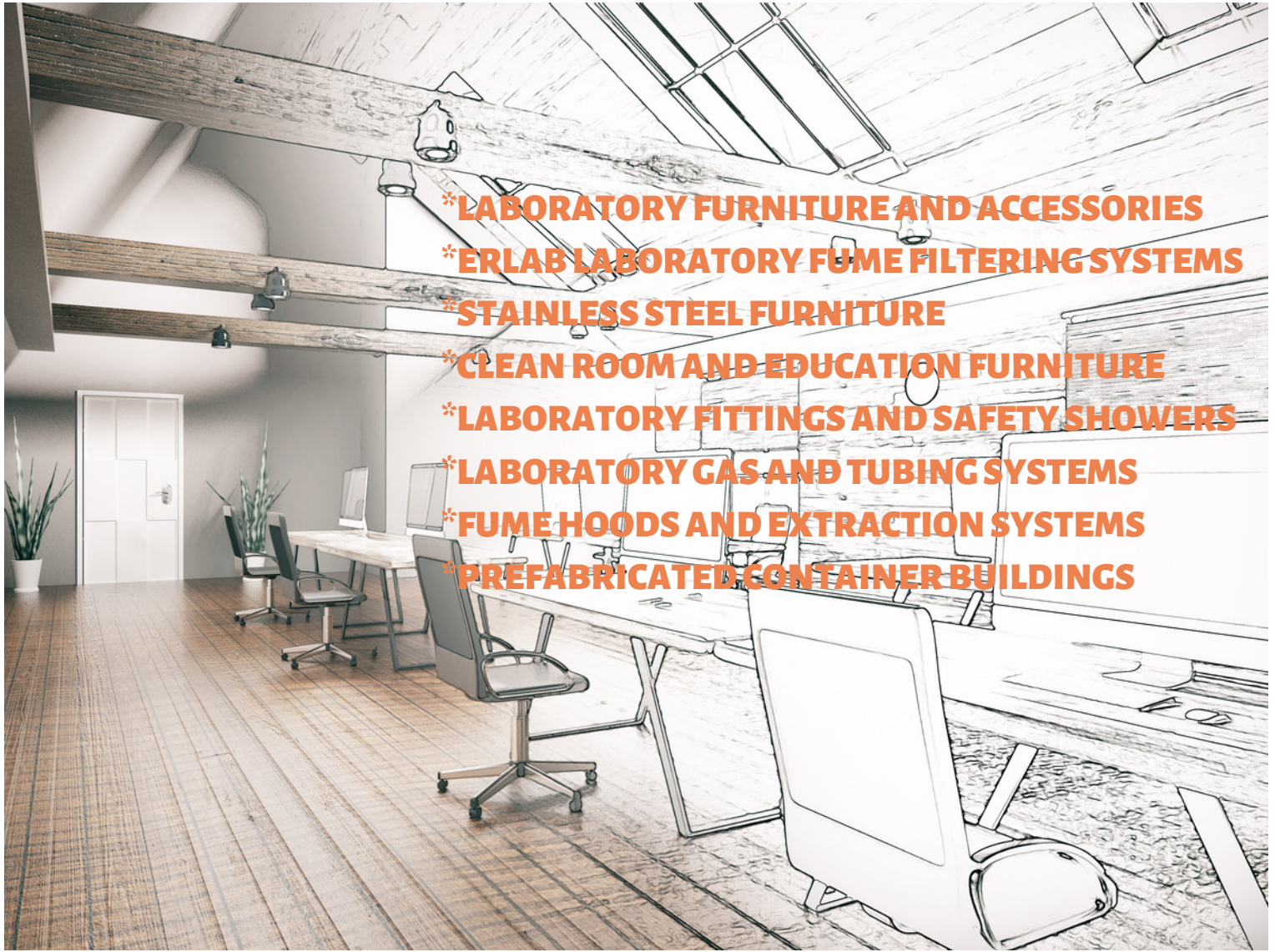






DISCLAIMER

The plans, images, specifications and other details given in this brochure are only indicative and the developer reserves the right to change any or all of these in the interest of the project or development. This document does not constitute an offer or any contract of any nature whatsoever. Any purchases/ legal agreement or document/s in any project shall be governed by the terms and conditions of the agreement entered into between the parties and no details mentioned in this document shall govern the transaction.



- *LABORATORY FURNITURE AND ACCESSORIES
- *ERLAB LABORATORY FUME FILTERING SYSTEMS
- *STAINLESS STEEL FURNITURE
- *CLEAN ROOM AND EDUCATION FURNITURE
- *LABORATORY FITTINGS AND SAFETY SHOWERS
- *LABORATORY GAS AND TUBING SYSTEMS
- *FUME HOODS AND EXTRACTION SYSTEMS
- *PREFABRICATED CONTAINER BUILDINGS


GENERAL TRADING LLC.

P. O. BOX. 66902, SHARJAH,
UNITED ARAB EMIRATES
Tel: +97165771201 Fax: +97165771293
Mob: +971506703704, +971506289965
info@morayme.com, ask@morayme.com
www.morayme.com

